



WITHDRAWAL FROM LEARNING FORM

Pupils are in school for **190 days** each year.
There are 175 days for holidays and other activities.

96% Attendance is required.

95% attendance means 50 missed lessons. This means a child has missed 9 days.

90% attendance means 100 missed lessons. This means a child has missed 20 days.

Please note the following;

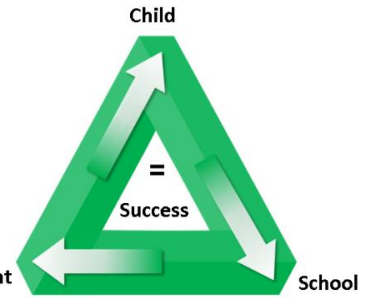
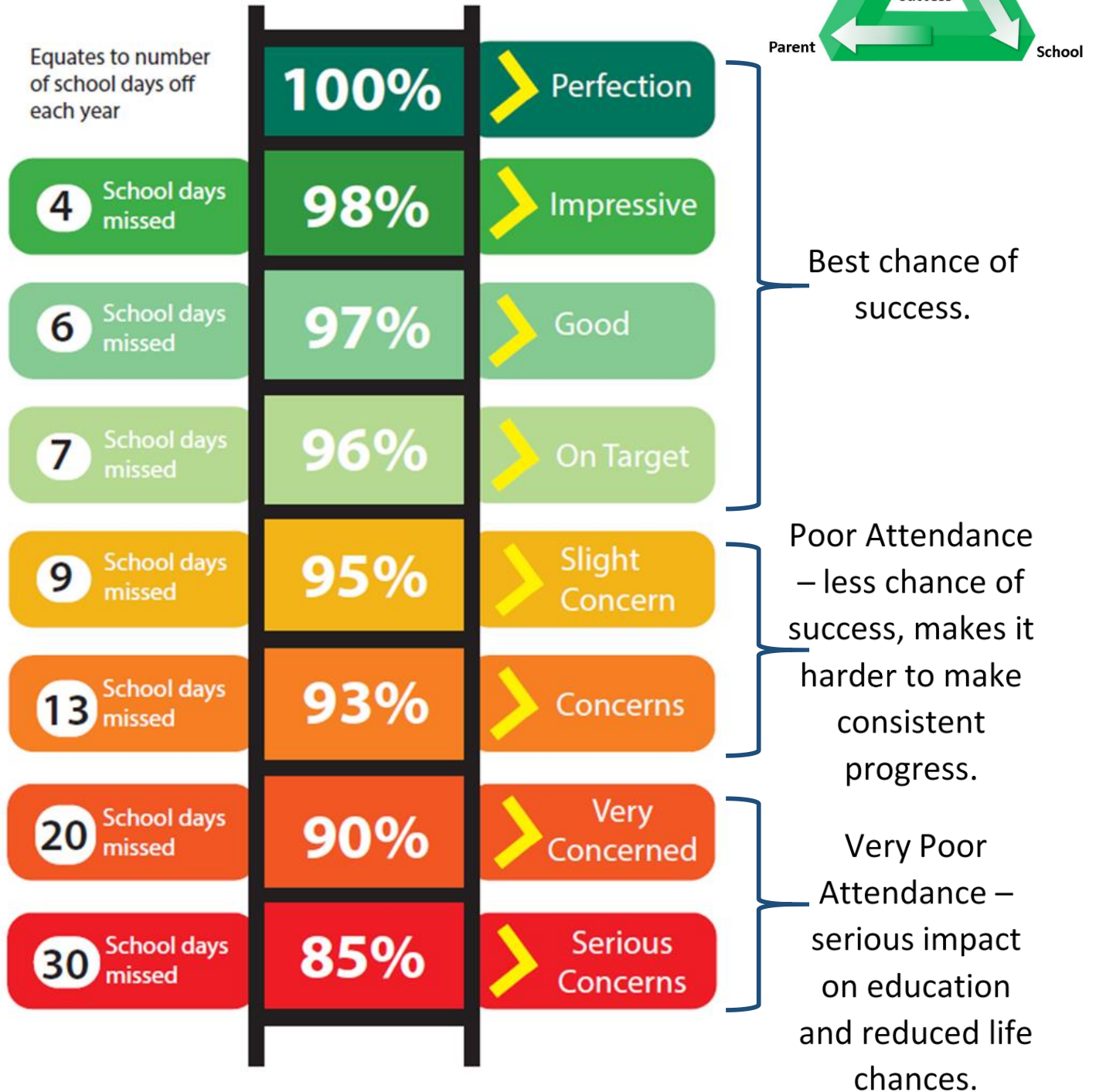
- Regular school attendance (96%) is vital for children to maintain good progress.
- **Seaside Primary School does not authorise ANY holidays.**
- Absence will only be granted in very exceptional circumstances.
- Parents must state why they consider it essential for their child to take such time off school.
- All sessions missed when a child is on holiday will be unauthorised.
- The school will refer pupils with 10 sessions or more (5 or more days) unauthorised absence within a 10 week period, to the Local Authority for a Fixed Penalty Notice consideration.
- No absence will be authorised during the National Curriculum Test Week (SATS), KS1 Phonics, Year 4 Multiplication Tables Check.

Child's Name:		Class:	
Inclusive dates:	From	To	Total number of school days:
Reason for seeking absence during term time:			
Signed Parent/Carer:		Date:	

School Office to complete this section

Current attendance %	Date received by school office	
	Headteacher Attendance log completed	
	Number of unauthorised absences	
Signed Headteacher:		Date:

Attendance Ladder



190 School days in each year
175 Non-term Days – Time for holidays, shopping, appointments